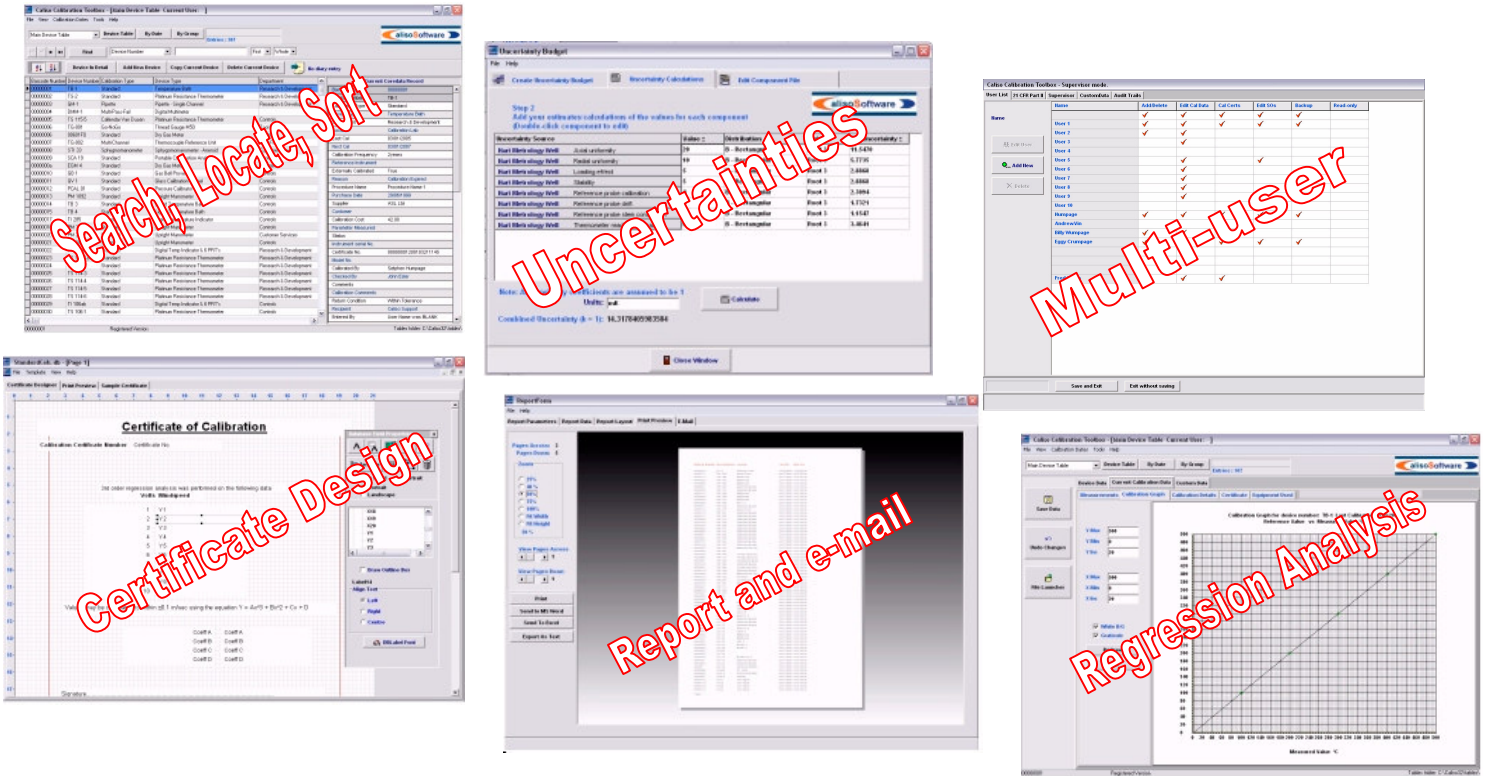


Caliso Calibration Toolbox

Calibration Management Software for Scientists and Engineers

Used and trusted by scientists and engineers all over the world for over 10 years, Caliso Calibration Toolbox has become the standard by which all calibration management software is judged. Why? - because no other calibration management software can compare when it comes to available features, ease of use and value for money.

There is full compliance with the requirements of both **21CFR Part 11** and **FDA validation** guidelines, and you will find a comprehensive set of tools to help you with practically all of the jobs required in modern calibration facilities. Caliso Calibration Toolbox is unique, Caliso Calibration Toolbox is the leader, as we will now show you:



Search, Locate, Sort

Uncertainties

Multi-user

Certificate Design

Report and e-mail

Regression Analysis

Unrivalled Help and Support

We really want you to enjoy using Caliso Calibration Toolbox so, when it comes to helping you get the most from the software, we provide a level of help and support that is second to none:

- FREE updates for 3 months
- FREE telephone and e-mail support for 3 months
- Comprehensive, 3 volume PDF user manual
- Help files included with the software
- On-site user training courses (from either Caliso direct or from one of our international distributors where appropriate)

And, just as importantly, our free data conversion service described opposite.

FREE Data Conversion

If you can send us your current device database in Excel, Access or similar PC files, we will convert it into Calibration Toolbox format free of charge. This means that you will be up-and-running with Calibration Toolbox straight away without the need to re-enter your existing data.

Supported file types:

- Microsoft Access
- Microsoft Excel
- Corel Paradox
- Dbase
- Text (comma or tab delimited)

21 CFR Part 11

We are often asked how Caliso Calibration Toolbox addresses the issues raised by 21 CFR Part 11. The answer to this is simple: Calibration Toolbox meets all the requirements for software validation and electronic record keeping:



- FDA compliant Validation Pack available
- Secure Paradox database
- Login with user-names and passwords
- Full audit trail and exception logging
- 'Calibrated By' field is password protected
- Calibration and device movement histories
- Multi-level user access

In addition, Calibration Toolbox provides you with all the tools you need to export your data into programs (such as Adobe Acrobat, and MS Word) that support certificated electronic signatures to standards that are accepted the world over. That way, you can create certificates, reports, in fact anything you need, in full confidence that your compliance is not compromised.

Software Validation

Caliso Calibration Toolbox, is widely used throughout the healthcare, pharmaceutical and biotechnology industries. To simplify the process of software validation for these users, and hence reduce costs, a Software Validation Pack is available. This will enable you to validate Caliso Calibration Toolbox in accordance with the guidelines specified by the U.S. Food and Drug Administration (FDA).

What Does this Validation Pack Contain ?

VOLUME 1

Validation and Verification Carried out on Caliso Calibration Toolbox as part of the Software Development Process

- A description of the System Requirements Specification.
- A description of the Validation Plan including test procedures and specifications used for the in-house validation of the software.
- A report on the final tests carried out on Caliso Calibration Toolbox.

VOLUME 2

End-User Software Validation

- Guidelines for validation of Caliso Calibration Toolbox by the user in its intended location.



Volume 1 demonstrates that Caliso Calibration Toolbox was designed and tested in accordance with internationally accepted software validation principles. A comprehensive system requirements specification is given and results of key software tests provided. Also in the documentation a detailed description is provided on how the project of developing Caliso Calibration Toolbox was carried out in terms of change management and verification and integration testing.

The second volume is intended to help you, the Caliso Calibration Toolbox user, validate the software in the location in which you intend to use it. Consider it as a follow on to the documentation in the first volume (in other words we have done our part we are now going to help you to carry out yours).

This documentation is structured so that you can complete all of the necessary validation tasks as quickly and efficiently as possible.

The Validation pack is presented in 2 printed volumes, and Volume 2 is also included on CD so that you can re-validate any new installations or changes as often as you like.

Pipette Calibration

If you are required to perform routine pipette calibrations or accuracy checks, you'll be very interested in the Caliso Pipette Calibration Module, an add-on to Caliso Calibration Toolbox. It reduces the amount of work involved in your gravimetric pipette calibrations by automatically recording water weight readings from your laboratory balance and then performing all necessary calculations for you.

Other pipette programs available, but that's the point, **PIPETTES ONLY**. Calibration Toolbox, on the other hand, gives you all of the extra functionality that you would expect from the world's leading calibration management software. Enough said ?

Pipette Module Features:

- **RS232 Interface to most lab balances to automatically record weight of aliquots, or manual entry for those who prefer**
- **Calculation of Z-Factor, Imprecision and Inaccuracy**
- **Export Data to Excel or directly into Caliso Calibration Toolbox**



Also, should you require a complete solution we can offer you the following package:

- Precision Laboratory Balance (a range of "Oxford Instruments" balances are available)
- Interface Cable
- Vapour Trap
- Caliso Calibration Toolbox c/w Pipette Module

A Wide Range of Calibration Data Types

Caliso Calibration Toolbox comes, as standard, with a range of in-built calibration data types. This enables you to store data and perform all calculations specific your instruments. Simply chose from the 'Calibration Type' drop-down list for each instrument on your database.



ITS-90

Fully supported coefficient calculations for fixed-point cell calibrations, based on the International Temperature Scale. Intended for use in primary laboratories, or low uncertainty secondary laboratories.



Callendar Van Dusen

Calculation of Callendar Van Dusen coefficients for platinum resistance thermometers. Intended for use in secondary or medium uncertainty industrial laboratories equipped with a temperature block and reference thermometer.



Standard

For use in comparison calibrations where measurements are compared to those indicated by a traceable reference standard e.g. thermometers, flow meters, Vernier micrometers, etc. Up to 3rd order regression (curve-fit) can be performed.



Multi-Channel

Used for patient monitoring devices, data-loggers, or other instruments that measure a number of parameters that each require multi-point calibration.



Multi Pass-Fail

Used to record single-point calibrations for up to 20 channels.



Sphygmomanometer

Blood pressure monitoring instruments. Multi-point pressure calibration (rising and falling) against a traceably calibrated pressure measuring instrument. Provision is also included to record a cuff pressure-leakage test.



Go No-Go Gauges

Specifically designed for calibrations on double-ended mechanical measuring devices such as thread gauges, plug gauges etc. Multi-point calibrations of up to 3 parameters at the Go and No-Go ends can be recorded.



Pipette

Used to perform calculations on gravimetric calibrations of pipettes. Z-factor is calculated from the ambient conditions, and this is used to convert the recorded aliquot weights into volumes. Standard deviations, uncertainty an imprecision are also calculated. Accepts data directly from the Pipette Module.

Features

- Used by calibration laboratories of all types
- Complies with 21 CFR Part 11.
- Extensive help files and manuals
- Export data files to other applications
- E-mail recall notices, reports, messages to pre-selected addresses
- Support for scanned and PDF certificates
- Open external applications from within program
- Calibration and device movement histories
- Access stored information and reference files such as calibration procedures
- WYSIWYG certificate and report builders
- 1st, 2nd and 3rd order regression analysis
- Uncertainty calculations in accordance with GUM.
- Instant graphs.
- ITS-90 and Callendar van Dusen calculations
- Calibration Cost Analysis

When it comes to calibration management software, the world's finest use the world's best.



Caliso Calibration Toolbox

Software from Humpage Technology Ltd



Humpage Technology Ltd
46 Rockspray Grove
Walnut Tree
Milton Keynes
MK7 7EA
United Kingdom
Tel: (+44) (0) 1908 675472

Your Caliso distributor is:

BARBER InSys,
5 Swan Lane,
Sandy, Beds SG19 1NE
Phone: 01767 692692
Fax: 01767 691831
Email: caliso@barber-insys.co.uk